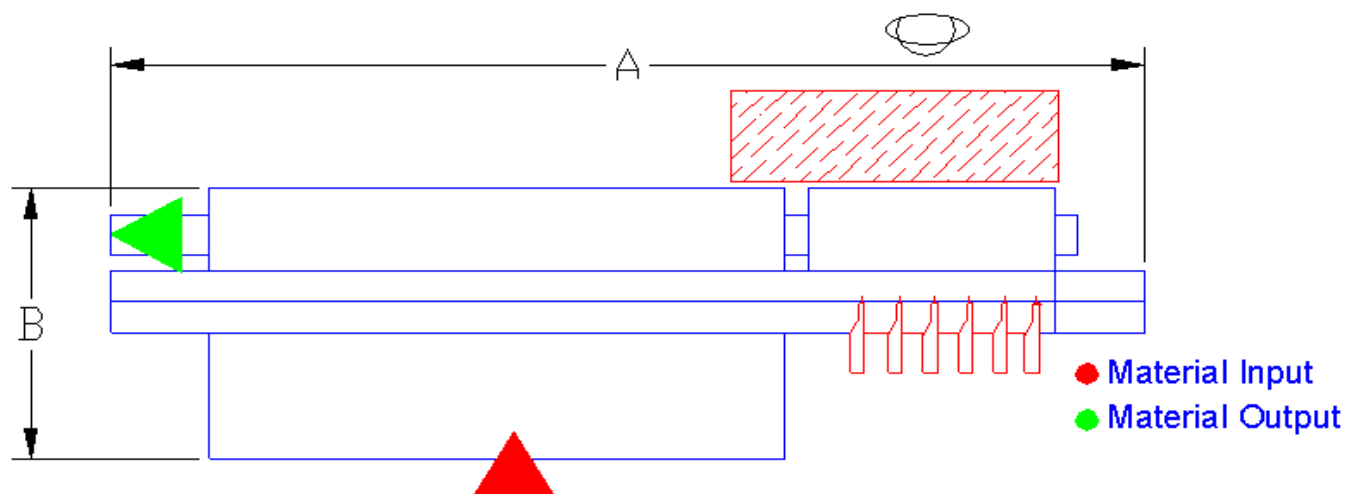


Baycinco/SL CRRA-5000

Machine to cut the wound tubes in
roller sleeves.



Technical Data

| | |
|--------------------------|-------------------------------|
| Installed Power | 3,5 KW |
| Power Supply | 220/380 V, 50/60 Hz , 3 phase |
| Air Consumption | 120 lt/min at 6 bar |
| Dimensions (A x B x H) | 6,3 x 2 x 2,1 mt |
| Weight | 1700 Kg |

Function and input-output

The machine cuts the wound tubes (from inner diam 30mm till 55mm) coming from the winding machine into sleeves of desired length.

A set up and the replacement of some mechanical parts is necessary to switch from one diameter to the other.

The machine, in its standard version, can only cut one tube diameter.

Minimum length cuttable is 60mm.

This machine works in line with the machine MRP-480.

Input wound tubes coming from MRP 480

Output sleeves cut at desired length ready to be
processed by machine ACR-6000



Baycinco SL

Avda. Arraona, 34-44

P.I. Can Salvatella

08210 Barberà del Vallès (Barcellona) - Spagna -

Phone: 0034 - 93 - 7181416 Fax 0034 - 93 - 7182715

e-mail: baycinco@baycinco.com

Baycinco/SL CRRRA-5000

Machine to cut the wound tubes in
roller sleeves.

