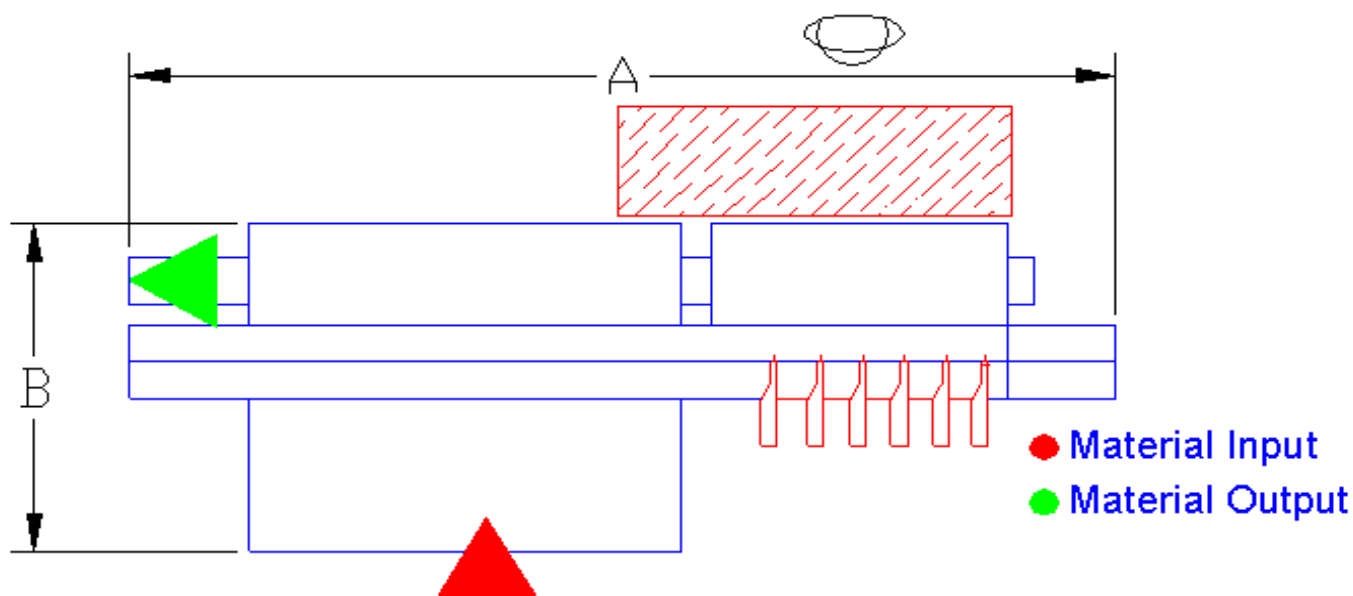


Baycinco/SL CRRRA-2500

Machine to cut the wound tubes in
miniroller sleeves.



Technical Data

Installed Power	3,5 KW
Power Supply	220/380 V, 50/60 Hz , 3 phase
Air Consumption	120 lt/min at 6 bar
Dimensions (A x B x H)	4,9 x 2 x 2,1 mt
Weight	1200 Kg

Function and input-output

The machine cuts the wound tubes (from inner diam 14mm till 30mm) coming from the winding machine into sleeves of the desired length.

A set up and the replacement of some mechanical parts is necessary to switch from one diameter to the other.

The machine, in its standard version, can only cut one tube diameter.

Minimum length cuttable is 50mm.

This machine works in line with the machine MRP-490.

Input wound tubes coming from MRP 490

Output sleeves cut at desired length ready to be processed by the machine RCP-1000II (for minirollers) or RCP-2000 (for midirollers)



Baycinco SL

Avda. Arraona, 34-44

P.I. Can Salvatella

08210 Barberà del Vallès (Barcelona) - Spagna -

Phone: 0034 - 93 - 7181416 Fax 0034 - 93 - 7182715

e-mail: baycinco@baycinco.com

Baycinco/SL
CRRA-2500

**Machine to cut the wound tubes in
miniroller sleeves.**

